

Who Helps a Farmer Grow a Christmas Tree - Career Cards and Teacher Key

Accountant keeps, inspects, and helps with financial records like paying taxes

Real Estate Agent sells buildings and land for clients

Banker manages accounts and loans money for purchase of equipment as well as repairs on a farm

Nursery manager orders a variety of trees and sells young trees to farmer for replanting each year

Herbicide specialist helps farmer control noxious weeds through careful, precise application of herbicide

Integrated pest management monitors for unwanted and treats accordingly with insecticides

Fertilizer salesperson works with many companies to get good prices on the right types of fertilizer

Chemical representative keeps farmer updated on any changes in chemical applications

Irrigation Specialist responsible for the sales, programming, operating and maintenance of irrigation systems to help produce a more beautiful crop. Provide system recommendations to fit the needs of the farmer

Fuel salesman supplies fuel in bulk (large) quantities for the farmer to run equipment

Cooperative manager facilitates good deals for a large group of farmers, increases purchase power

Machinery dealer helps farmer purchase, maintain, and repair equipment (tractors) used on the farm

Local welder builds and repairs metal carts used for hauling trees as repairing implements

Agronomist plant scientist who evaluates soil and growing conditions to help improve crops

Seasonal laborer employees of the farm who help with the physical duties of cutting and selling trees, Helps customers select a tree, loads the tree on carts, shakes out the old needles, trim the trunk and drills holes for the tree stand net wrap the tree measure the tree, deliver to tree to vehicle, invites customer to return next year

Marketing specialist helps farmer decide what species of trees to sell as well as help with advertising

Tech Support assists the farmer when using computers for records, ordering supplies, or advertising

Cashier takes payment for trees, runs a cash register or digital device, manages cash and credit card sales, keeps records of each sale

Internet provider connects farmer to customers and suppliers through the world wide web

Electrician manages the lighting needs for farm and out buildings as well as computers and devices

Accountant

Real Estate
Agent

Banker

Nursery
Manager

Herbicide
Specialist

Integrated
Pest
Manager

Fertilizer
Salesperson

Chemical
representative

Irrigation
Specialist

Fuel
Salesman

Cooperative
Manager

Machinery
Dealer

Local
Welder

Agronomist

Seasonal
Laborer

Marketing
Specialist

Technical
Support

Cashier

Internet
Provider

Electrician

keeps, inspects, and helps with financial records like paying taxes



sells buildings and land for clients



manages accounts and loans money for purchase of equipment as well as repairs on a farm



orders a variety of trees and sells young trees to farmer for replanting each year



helps farmer control noxious weeds through careful, precise application of herbicide



monitors for unwanted pests and treats accordingly with careful application of insecticides



works with many companies to get good prices on the right types of fertilizer



keeps farmer updated on any changes in chemical applications

responsible for the sales, programming, operating and maintenance of irrigation systems to help produce a more beautiful crop. Provide system recommendations to fit the needs of the farmer



supplies fuel in bulk (large) quantities for the farmer to run equipment



facilitates good deals for a large group of farmers, increases purchase power



helps farmer purchase, maintain, and repair equipment (tractors) used on the farm

builds and
repairs
metal carts
used for
hauling
trees as
repairing
implements



plant scientist
who
evaluates soil
and growing
conditions to
help improve
crops

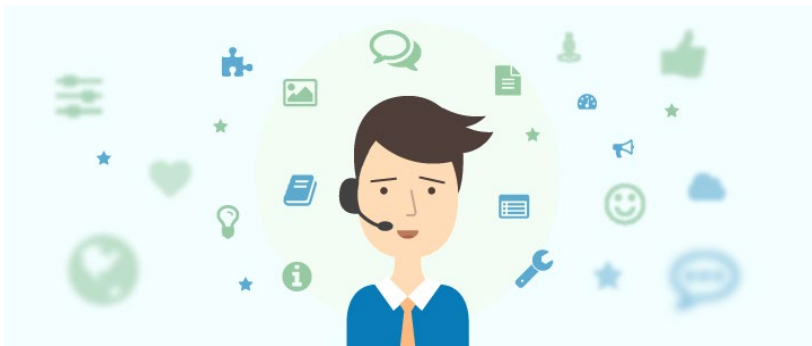


employees of the farm who help
with the physical duties of
cutting and selling trees, Helps
customers select a tree, loads
the tree on carts, shakes out the
old needles, trim the trunk and
drills holes for the tree stand net
wrap the tree measure the tree,
deliver to tree to vehicle, invites
customer to return next year



helps farmer decide what species of trees to
sell as well as help with advertising





assists the farmer when using computers for records, ordering supplies, or advertising

takes payment for trees, runs a cash register or digital device, makes change, manages cash and credit card sales payments, keeps records of each sale



connects farmer to customers and suppliers through the world wide web



manages the lighting needs for farm and out buildings as well as computers and devices